

The A to Z of waste separation in Luxembourg

By correctly separating our waste at home, we enable the recycling and reuse of materials such as paper, glass, plastic, metal and much more. This saves energy, water and raw materials and reduces our CO₂ emissions.

➤ For more information on waste disposal in your region, contact your municipality.

PAPER & CARDBOARD

- ✓ Exercise books and notepads (without foil and spiral binding)
- ✓ Newspapers, magazines and books
- ✓ Paper envelopes
- ✓ Paper packaging
- ✓ Writing and printing paper

- ✗ Disposable packaging with plastic coating
- ✗ Heavily soiled or greasy paper
- ✗ Milk and juice cartons
- ✗ Multi-layer packaging
- ✗ Paper napkins and wet wipes
- ✗ Wallpaper



PLASTIC & METAL PACKAGING, DRINKS CARTONS (BLUE BAG)

- ✓ Metal packaging
- ✓ Milk and juice cartons
- ✓ Plastic bottles and flasks
- ✓ Plastic films and bags
- ✓ Plastic pots, cups and trays

- ✗ Spray cans
- ✗ Black plastic
- ✗ Coffee capsules
- ✗ Multi-layer packaging
- ✗ Polystyrene and styrofoam
- ✗ Plastic and metal products that are not packaging
- ✗ Packaging with GHS symbol (except symbol with exclamation mark)
- ✗ Packaging for medicines, syringes and other medical equipment
- ✗ Paper and cardboard



➤ www.valorlux.lu

VALORLUX BE THE CHANGE

GLASS

- ✓ Glass bottles without caps
- ✓ Glass containers without lids
- ✓ Glass jars



- ✗ Borosilicate
- ✗ Light bulbs, lamps and other light sources
- ✗ Porcelain and ceramics
- ✗ Window and mirror glass

HAZARDOUS WASTE & PROBLEM WASTE

In Luxembourg, the SuperDrecksKëscht® fir Bierger collects products containing hazardous substances from private households.

➤ www.sdk.lu



- ✓ Spray cans
- ✓ Batteries
- ✓ Containers with hazard symbols
- ✓ DVDs and cassettes
- ✓ Fertilizers and pesticides
- ✓ LED and neon lamps
- ✓ Medicines, cosmetics and medical waste, as well as syringes
- ✓ Oils, fats and fuels
- ✓ Pressurized gas cylinders
- ✓ Paints and varnishes
- ✓ Solvents, chemicals and cleaning agents
- ✓ Toner and ink cartridges

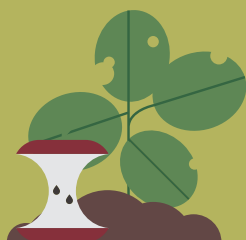


➤ Further information on batteries and rechargeable batteries at: www.ecobatterien.lu

ecobatterien
association sans but lucratif

BIOWASTE

- ✓ Coffee and tea leftovers
- ✓ Garden waste, grass, small plants and flowers
- ✓ Kitchen and food waste
- ✓ Paper bags and newspapers used to wrap kitchen waste



- ✗ Ash, coal, rubbish, Hoover bags and cigarette butts
- ✗ Cat litter and diapers
- ✗ Fats and oils
- ✗ Napkins and tissues
- ✗ Plastic packaging and other biodegradable plastic

ELECTRONIC & ELECTRIC WASTE

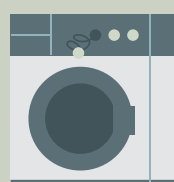
Ecotrel collects electronic and electric waste in cooperation with SuperDrecksKëscht®, the municipalities, resource centers and retailers.

- ✓ Computers, mobile phones and smartphones
- ✓ Large and small household appliances
- ✓ LED and neon lamps
- ✓ Refrigerators, air conditioners and oil radiators
- ✓ Screens

- ✗ Batteries
- ✗ Light bulbs

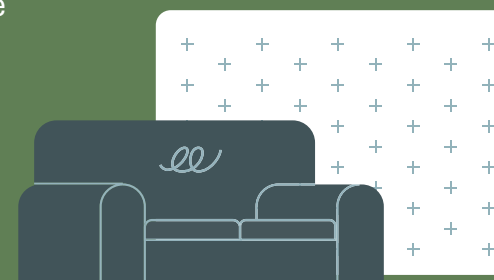
➤ www.ressources.lu

ecotrel
association sans but lucratif



BULKY WASTE

Large household items that do not fit into the regular waste bins (furniture, mattresses, carpets, etc.) are often collected by the municipalities on special dates or can be handed in at resource centers.



➤ www.emwelt.lu