



Restoration Seed Capital Facility

A NEW FACILITY TO PROMOTE INVESTMENT IN FOREST LANDSCAPE RESTORATION

**SUPPORTING FOREST RESTORATION IN DEVELOPING COUNTRIES,
CONTRIBUTING TO CLIMATE ADAPTATION AND MITIGATION,
BIODIVERSITY, AND SUSTAINABLE LIVELIHOODS**



Restoration Seed Capital Facility

1

What does the facility provide?

Co-funding for fund development or project pipeline development on a cost-sharing basis.



2

Who is eligible?

Fund managers or investment advisers managing and advising investment funds dedicated to land-use activities with restoration or conservation benefits or interested in developing new funds in this space.



3

Where is it active?

All ODA-eligible developing countries.

Why a Restoration Seed Capital Facility?

Half of all forest has been cleared and degraded. An investment in forests is an investment in our future. The Restoration Seed Capital Facility will help the powerful forces of private finance recognize and seize the opportunities of nature-based solutions to combine productive activities with healthy ecosystems. This way, we will increase our chance to tackle climate change, protect biodiversity and create long-term resilient jobs in communities, and at the same time fulfil our commitments envisioned by the UN's Sustainable Development Goals, and stipulated in the Paris Agreement and the Bonn Challenge.



What Does The Restoration Seed Capital Facility Do?

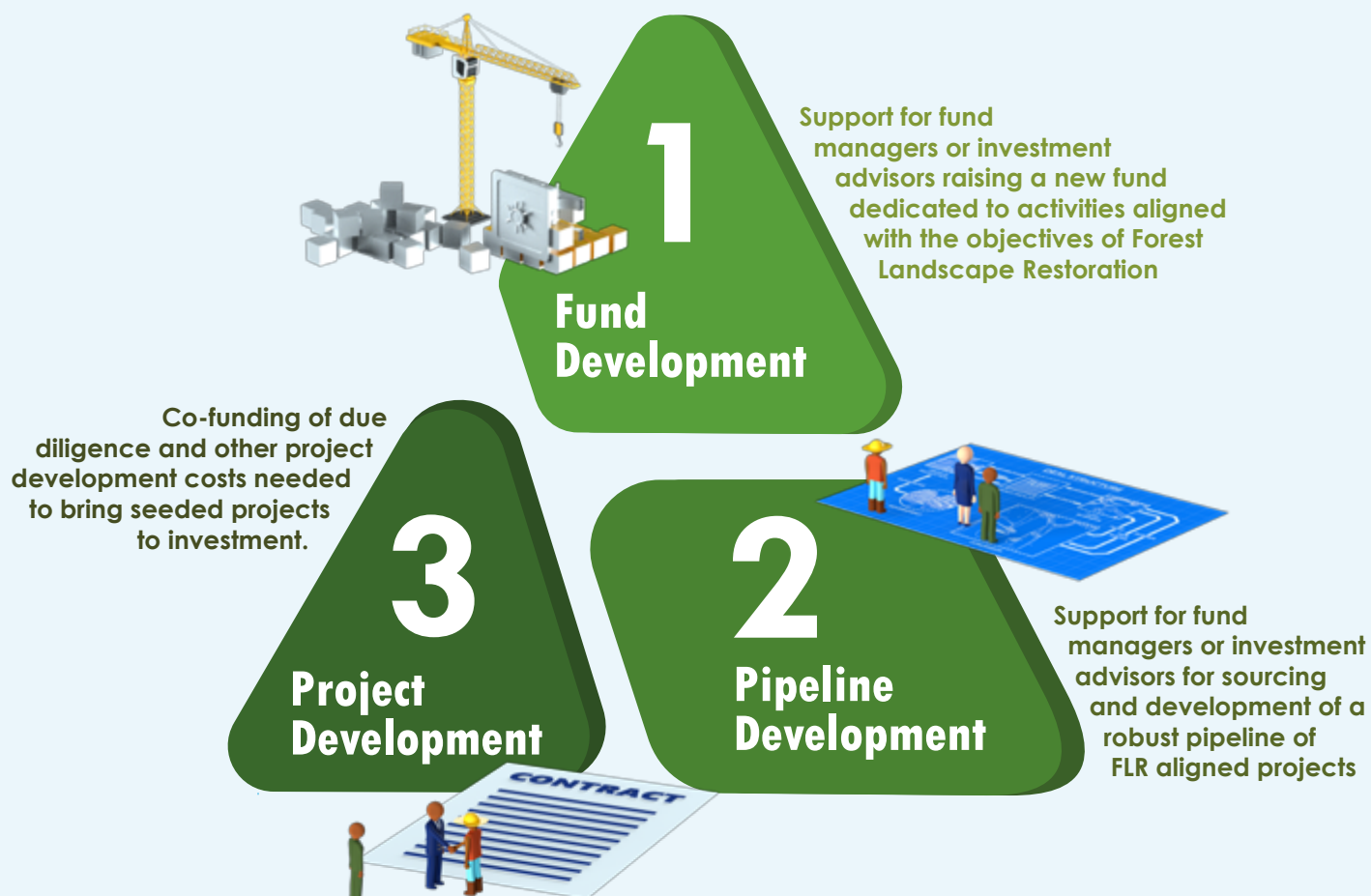
The Restoration Facility will promote private investment in forest restoration by making it easier for fund managers and investment advisors to set up funds dedicated to such activities and to bring projects to implementation faster. As a result, more projects will get funded, project developers and financial actors will enter the market, and the field will mature and scale up.



Productive Land Use Activities With a Restoration Component

- Agro-forestry
- Sustainable forestry on degraded lands
- Agricultural production on degraded lands
- Shift to silvo-pastoral systems
- Restoration of pasture or forest
- Generation of carbon credits
- Payment for ecosystem services
- Supply chain investments to support restorative land use activities

RESTORATION SEED CAPITAL FACILITY SUPPORT LINES



SELECTION CRITERIA



Eligibility Criteria:

- **Entity Type:** Fund managers or investment advisers
- **Geographical scope:** Developing countries only
- **Activities:** Aligned with goals of Forest Landscape restoration (agroforestry, sustainable forestry, NTFP, Carbon credits, etc.)
- **Environmental and Social Risk Management:** Robust E&S management policies in place
- **Environmental and Social Impact Reporting:** Robust reporting framework in place

Evaluation Criteria:

- **Capacity:** Experience, technical competence, geographical focus, integrity
- **Financial Additionality:** Ability to demonstrate how support will enable activities beyond business as usual
- **Impact additionality:** Ability to demonstrate how investment strategy translates into positive social and environmental impacts
- **Innovation:** Novel strategies, business models or geographies. Potential for replication and scalability

FOREST LANDSCAPE RESTORATION INVESTMENT VIRTUOUS CYCLE



POSITIVE IMPACTS FRAMEWORK

The investments advanced by the Restoration Seed Capital Facility provide positive impacts for climate adaptation and mitigation, biodiversity, and sustainable livelihoods. Risks are mitigated through robust environmental and social safeguard frameworks.

FOREST

RESTORED AT SCALE,
LEADING TO:

CLIMATE CHANGE
MITIGATION



RESILIENCE TO
CLIMATE CHANGE

BIODIVERSITY
CONSERVATION



IMPROVED
LIVELIHOODS

Partnerships

Well-functioning partnerships are essential to ensuring the long-term success and innovative approach of forest landscape restoration. The Restoration Seed Capital Facility facilitates opportunities for cooperation between all practitioners in the field.

The Restoration Facility will build on the extensive networks engaged in the UN Decade for Action on Ecosystem Restoration.





Restoration Seed Capital Facility

RSCF

www.restorationfacility.org

info@restorationfacility.org



Implementing partners:



FINANCING
SUSTAINABLE
LAND USE



Supported by:



Federal Ministry
for the Environment, Nature Conservation
and Nuclear Safety



THE GOVERNMENT
OF THE GRAND DUCHY OF LUXEMBOURG
Ministry of the Environment, Climate
and Sustainable Development